

Code Signing Digital ID

WHEN YOU NEED TO BE SURE



How to validate SGS Digital ID

1. Open the pdf file
2. Double click on the QUESTION mark



測試報告

統碼: [REDACTED] 日期: 2007/01/08

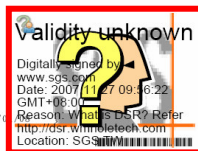
41號
ROAD, SAN CHUNG CITY, TAIPEI HSIEN, TAIWAN

以下測試樣品係由客戶送樣，且由客戶聲稱並經客戶確認如下(The following sample(s) was/were submitted and identified by/on behalf of the client as):

樣品名稱(Sample Description) : [REDACTED]
收件日期(Sample Receiving Date) : 2006/12/29
測試期間(Testing Period) : 2006/12/29 TO 2007/01/08

測試需求 / Test Requested : 參照 RoHS 2002/95/EC 及其修訂指令要求。 / In accordance with the RoHS Directive 2002/95/EC, and its amendment directives.

測試方法 / Test Method : (1) 參考 BS EN 1122方法B:2001, 用感應耦合電漿原子發射光譜儀檢測鎘含量。 / With reference to BS EN 1122:2001, Method B for Cadmium Content. Analysis was performed by ICP-AES.
(2) 參考 US EPA 3050B方法, 用感應耦合電漿原子發射光譜儀檢測鎘含量





How to validate SGS Digital ID

1. Open the pdf file
2. Double click on the QUESTION mark
3. Click on "Signature Properties..."

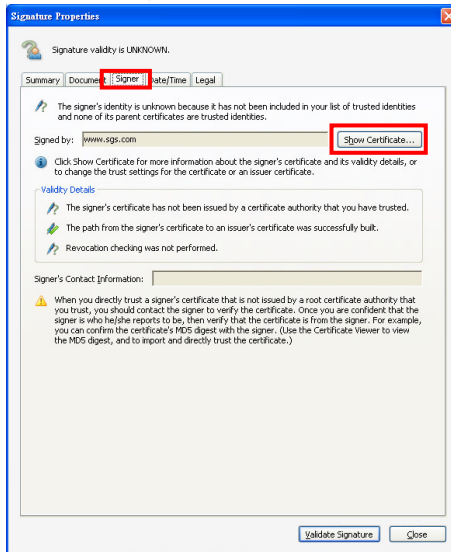


3

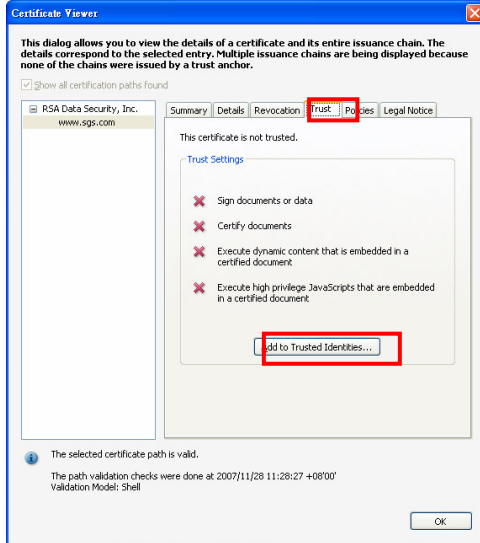


How to validate SGS Digital ID

1. Open the pdf file
2. Double click on the QUESTION mark
3. Click on "Signature Properties..."
4. Click on "Signer" → "Show Certificate..."

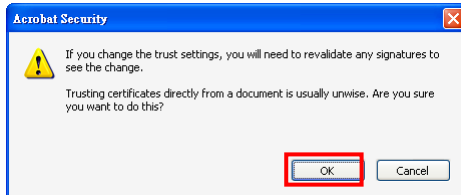


4



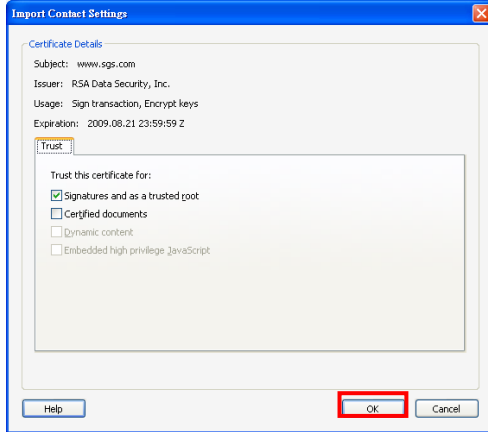
How to validate SGS Digital ID

1. Open the pdf file
2. Double click on the QUESTION mark
3. Click "Signature Properties..."
4. Click on "Signer"
 - "Show Certificate..."
- 5. Click on "Trust"**
 - "Add to Trust Identities"**



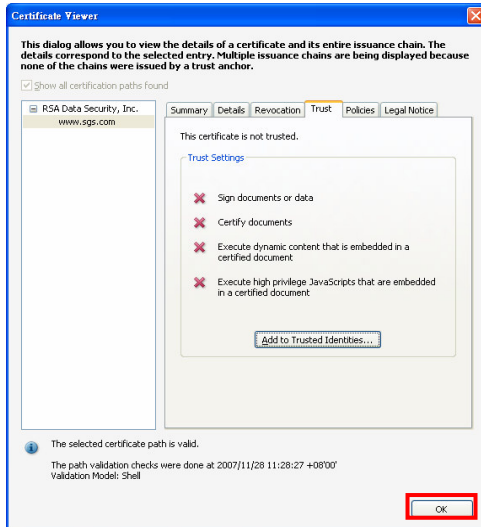
How to validate SGS Digital ID

1. Open the pdf file
2. Double click on the QUESTION mark
3. Click on "Signature Properties..."
4. Click on "Signer"
 - "Show Certificate..."
5. Click on "Trust"
 - "Add to Trust Identities"
- 6. Click on "OK"**



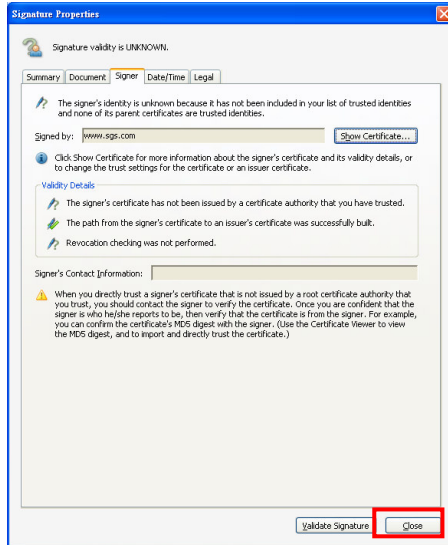
How to validate SGS Digital ID

1. Open the pdf file
2. Double click on the QUESTION mark
3. Click on "Signature Properties..."
4. Click on "Signer"
 - "Show Certificate..."
5. Click on "Trust"
 - "Add to Trust Identities"
6. Click on "OK"
- 7. Click on "OK"**



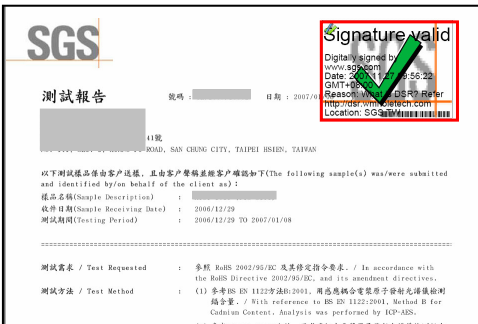
How to validate SGS Digital ID

1. Open the pdf file
2. Double click on the QUESTION mark
3. Click on "Signature Properties..."
4. Click on "Signer"
 - "Show Certificate..."
5. Click on "Trust"
 - "Add to Trust Identities"
6. Click on "OK"
7. Click on "OK"
- 8. Click on "OK"**



How to validate SGS Digital ID

1. Open the pdf file
2. Double click on the QUESTION mark
3. Click on "Signature Properties..."
4. Click on "Signer"
 - "Show Certificate..."
5. Click on "Trust"
 - 5. "Add to Trust Identities"
6. Click on "OK"
7. Click on "OK"
8. Click "OK"
9. Click on "Close"



How to validate SGS Digital ID

1. Open the pdf file
2. Double click on the QUESTION mark
3. Click on "Signature Properties..."
4. Click on "Signer"
 - "Show Certificate..."
5. Click on "Trust"
 - "Add to Trust Identities"
6. Click on "OK"
7. Click on "OK"
8. Click on "OK"
9. Click on "Close"
10. SGS Digital ID validation completed